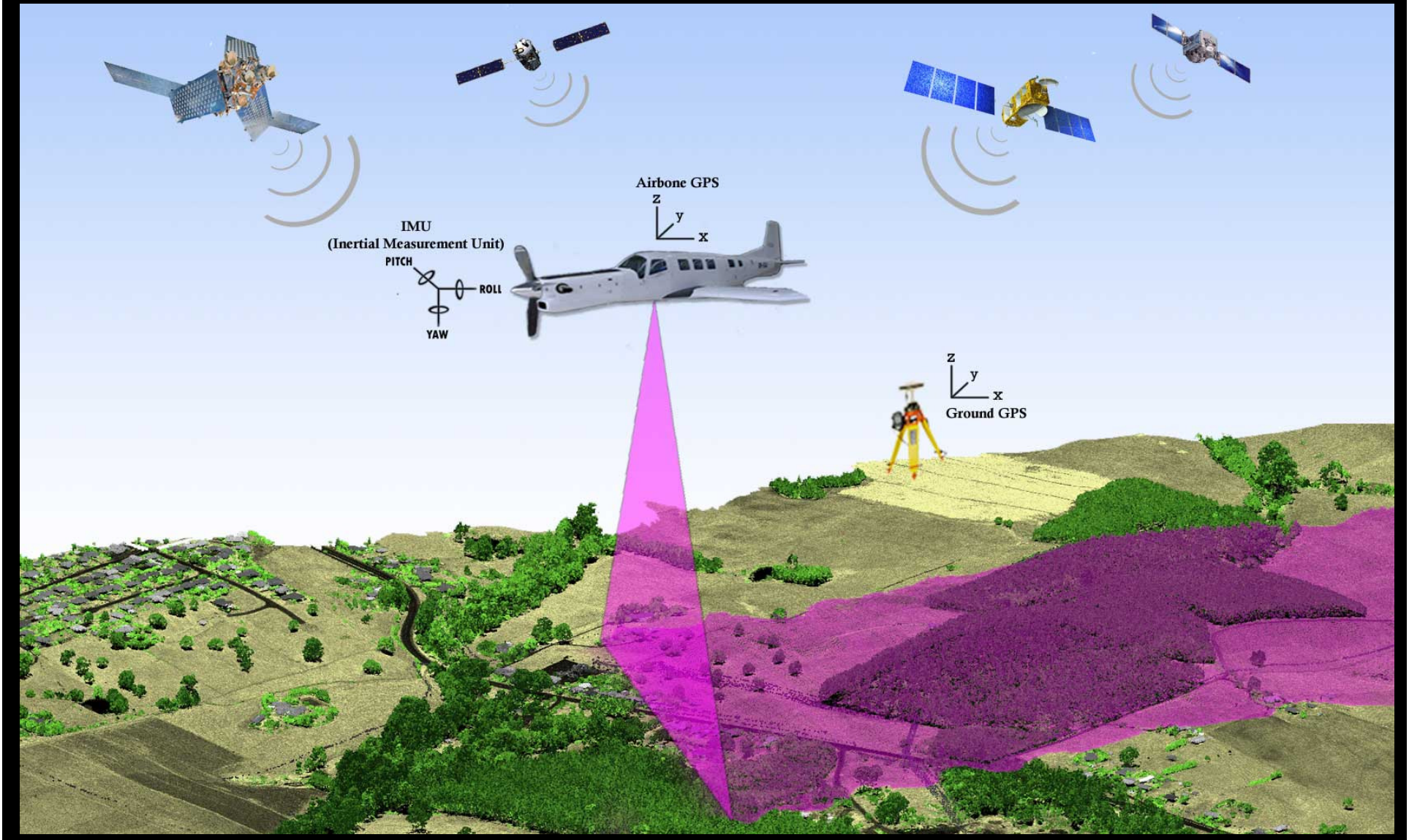


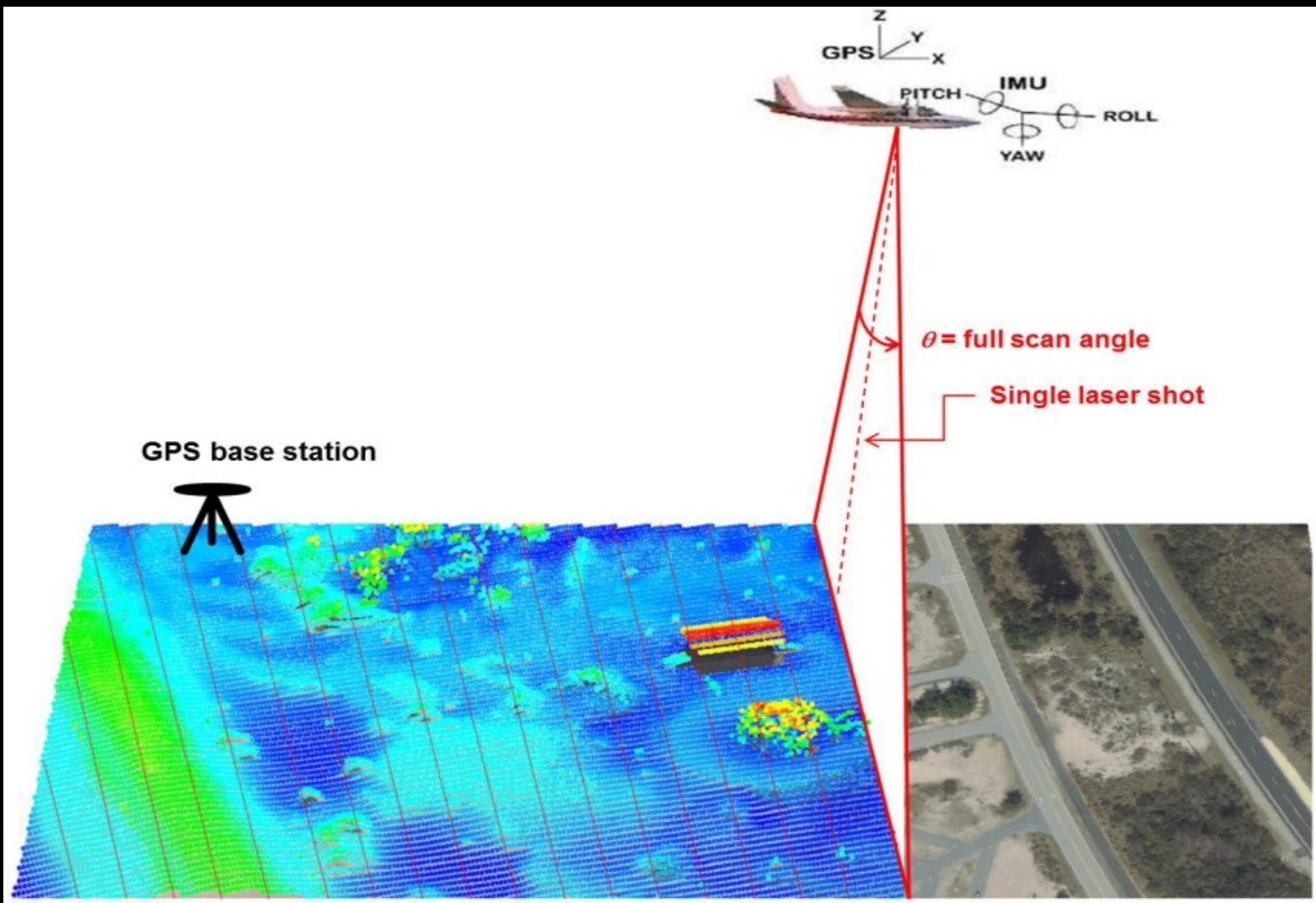
Emerging Geospatial Applications

Technologies - Applications

- Lidar
- 3D GIS
- BIM +GIS
- Mobile Mapping
- UAS
- Crowd Sourcing
- Geo ICT
- Smart Habitats (Smart Cities and Smart Villages)
- Climate Change
- Geo DSS

LIDAR





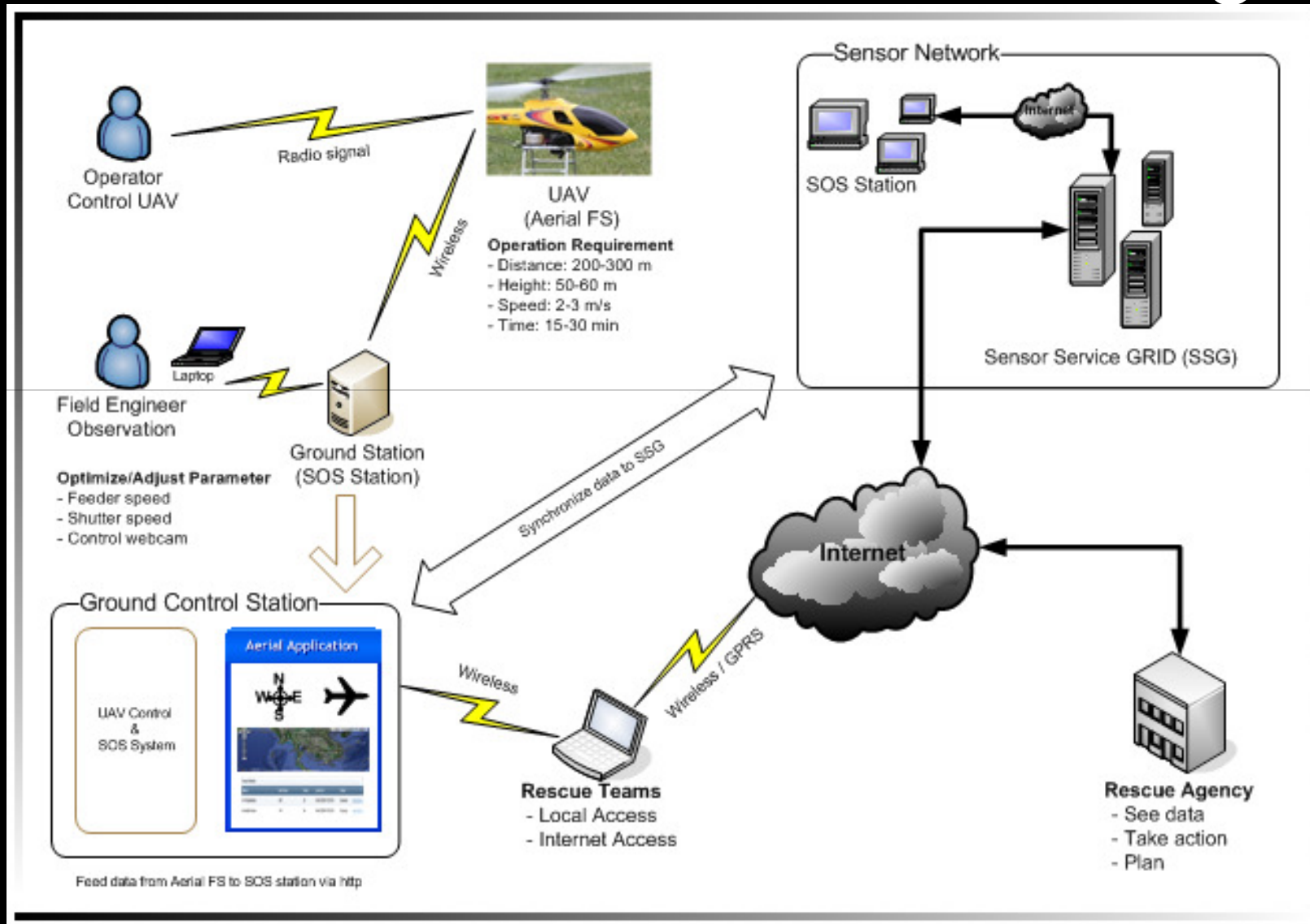
3D GIS



Mobile Mapping - Railways



UAS – Real time Monitoring



Crowd Sourcing

The screenshot displays the Bhuvan web application interface. At the top, the browser address bar shows the URL `bhuvan3.nrsc.gov.in/projects/manu/manu.php#`. The page header includes the Bhuvan logo, a search bar with the text "Enter City or Lat, Lon(ex:chi)", and the title "Mapping the Neighbourhood in Uttarakhand (MANU)".

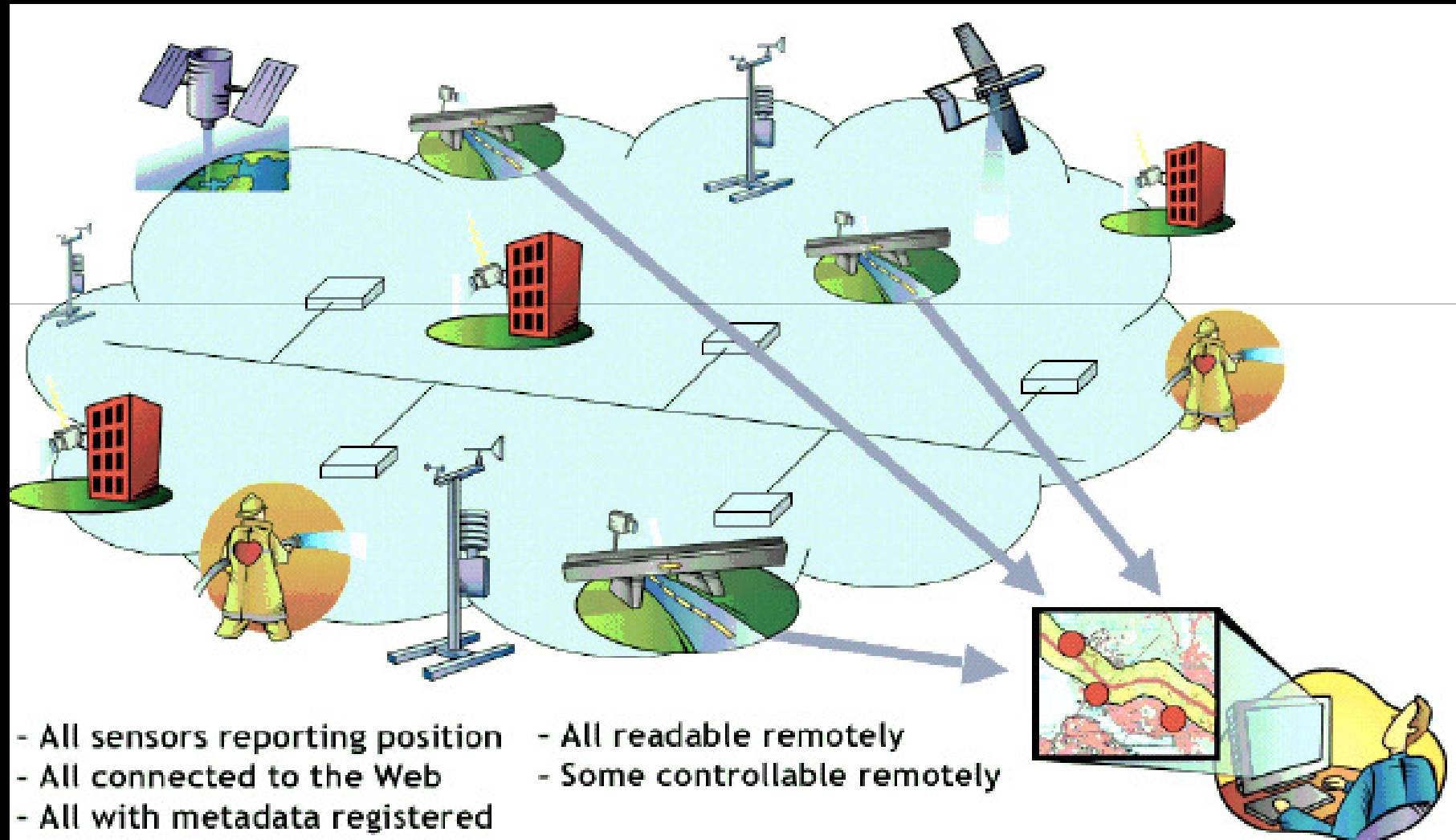
The main content area features a map of Uttarakhand, India, with various geographical features labeled, including Rakesham Chital Sanctuary, Govind Sanctuary, Kedarnath Sanctuary, Valley Of Flowers National Park, and Nanda Devi National Park. The map also shows major roads like NH 94, NH 108, NH 109, NH 58, NH 119, and NH 121. A scale bar at the bottom left indicates distances in kilometers (0, 20, 40).

On the left side, there is a sidebar with the following sections:

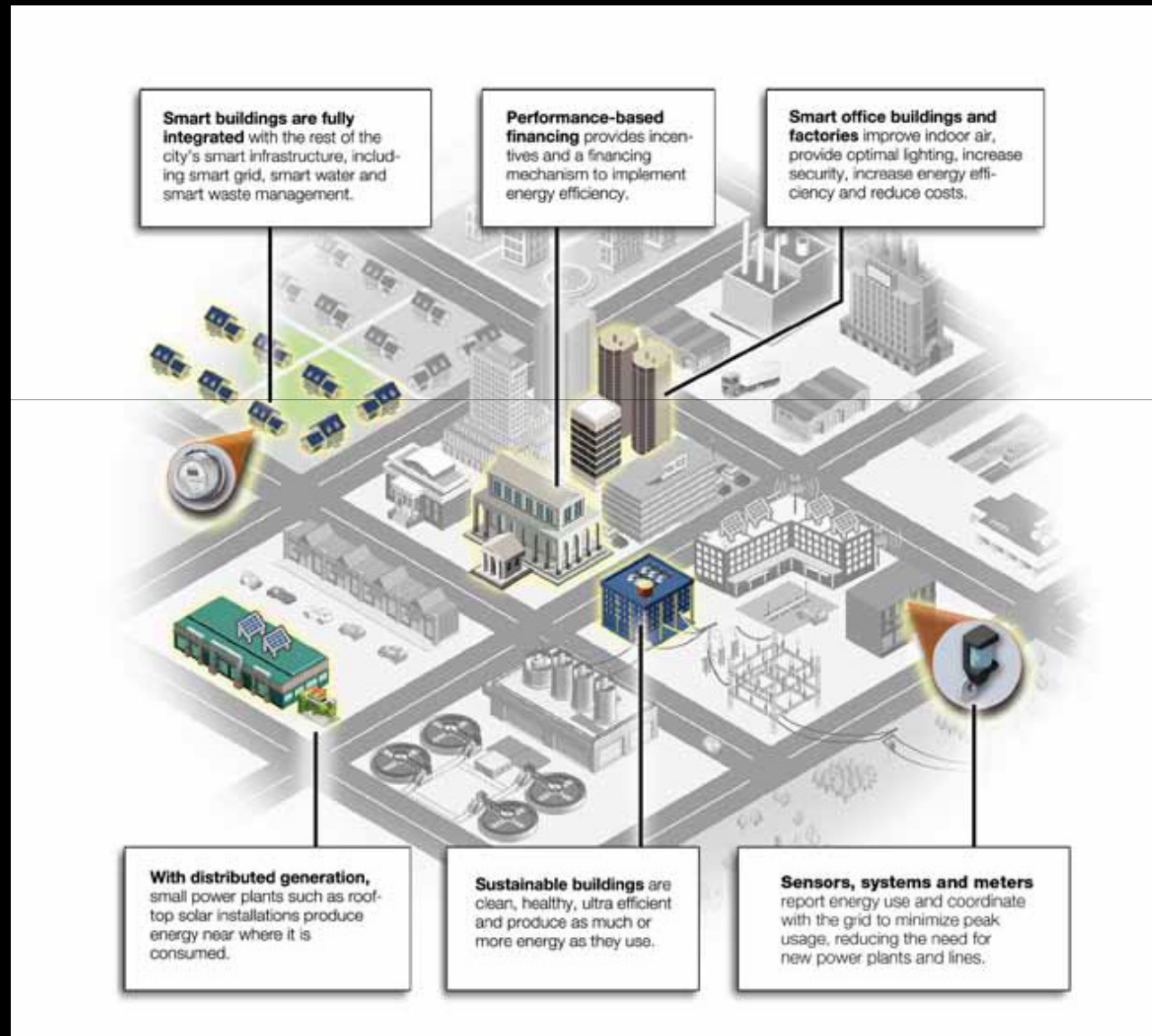
- Welcome User!** with a Login button.
- Quicklinks** listing:
 - [1. Bhuvan-Mapper](#)
 - [2. Bhuvan-Field Data Viewer](#)
 - [3. Bhuvan-3D Viewer](#)
 - [4. Bhuvan-Disaster Services\(DMIS\)](#)
 - [5. Bhuvan-Discussion Forum](#)
- Note:** CONTENT AVAILABLE IN 'USER ADDED CONTENT' ARE UNVERIFIED AND PROVIDED FOR INFORMATION PURPOSES ONLY. PLEASE READ DISCLAIMER FOR MORE DETAILS.
- Add Layer** and **Add Content** buttons.
- User Added Content and Layers** section with "All | Clear" and checkboxes for "Field Data(Mapper)" and "Field Data(Mobile)".
- User Added Layers** section.
- Download** and **Bhuvan Layers** sections.

At the bottom, the Windows taskbar shows the system tray with the time 11:38 and date 08-02-2015.

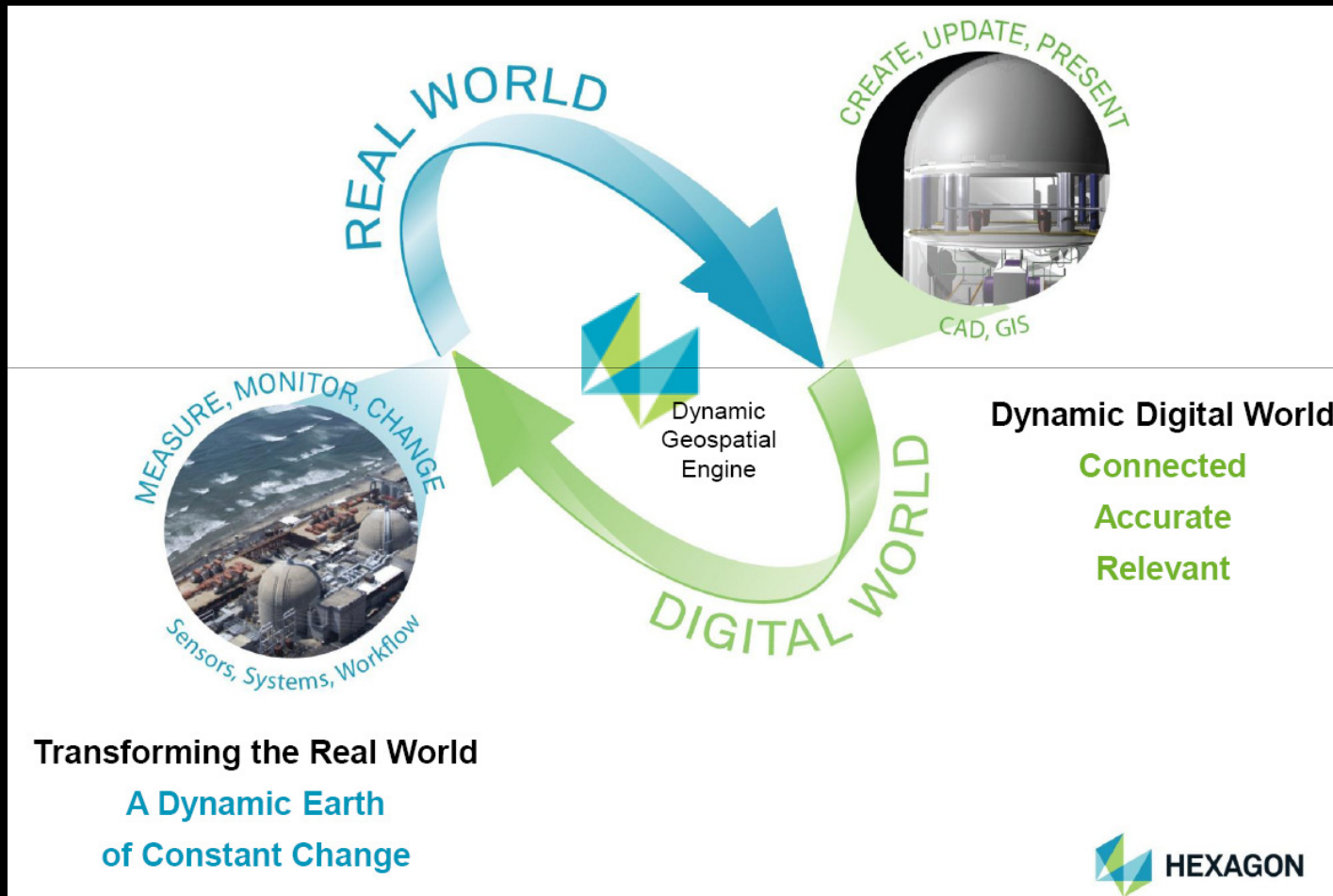
Geo ICT – Sensor Web



Smart Habitat



Smart Habitat



Climate Change

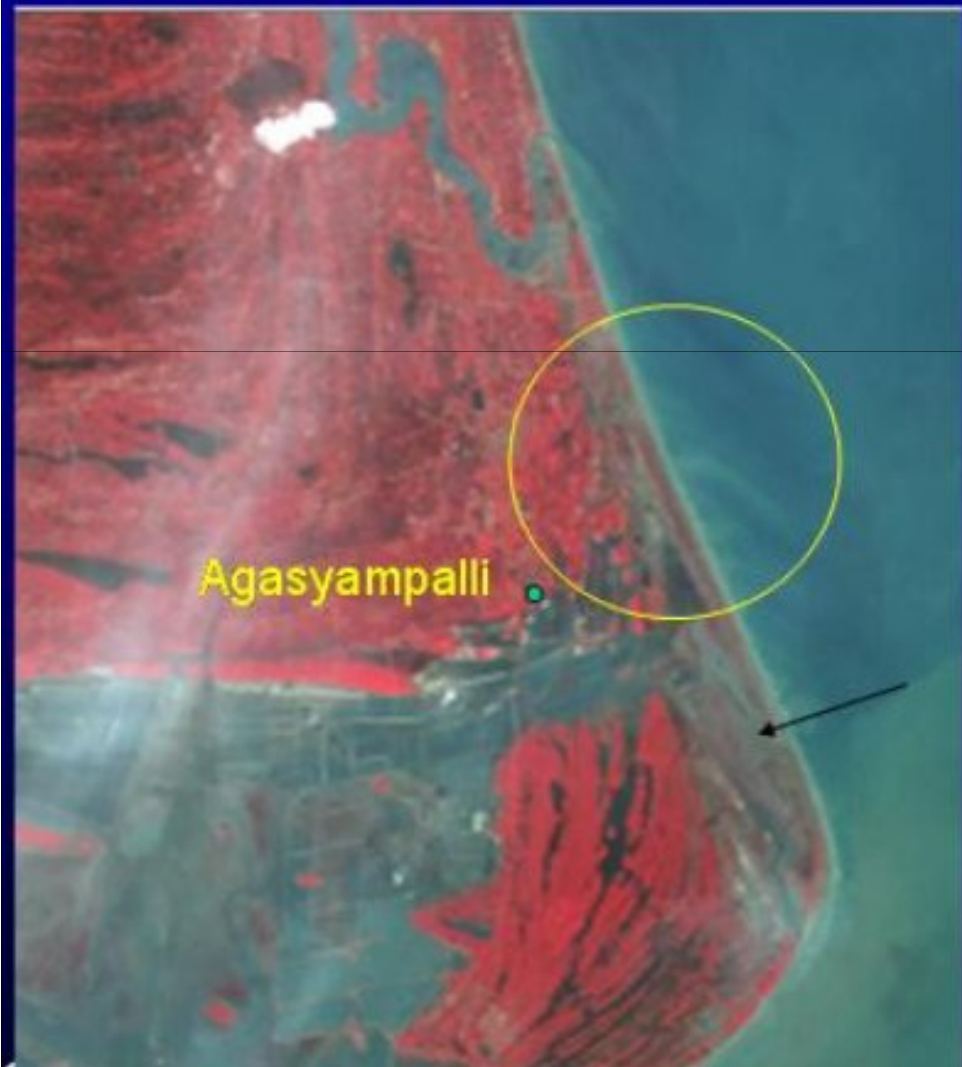


Tsunami - 2004

IRS P6 AWIFS Data

18 December 2004

28 December 2004

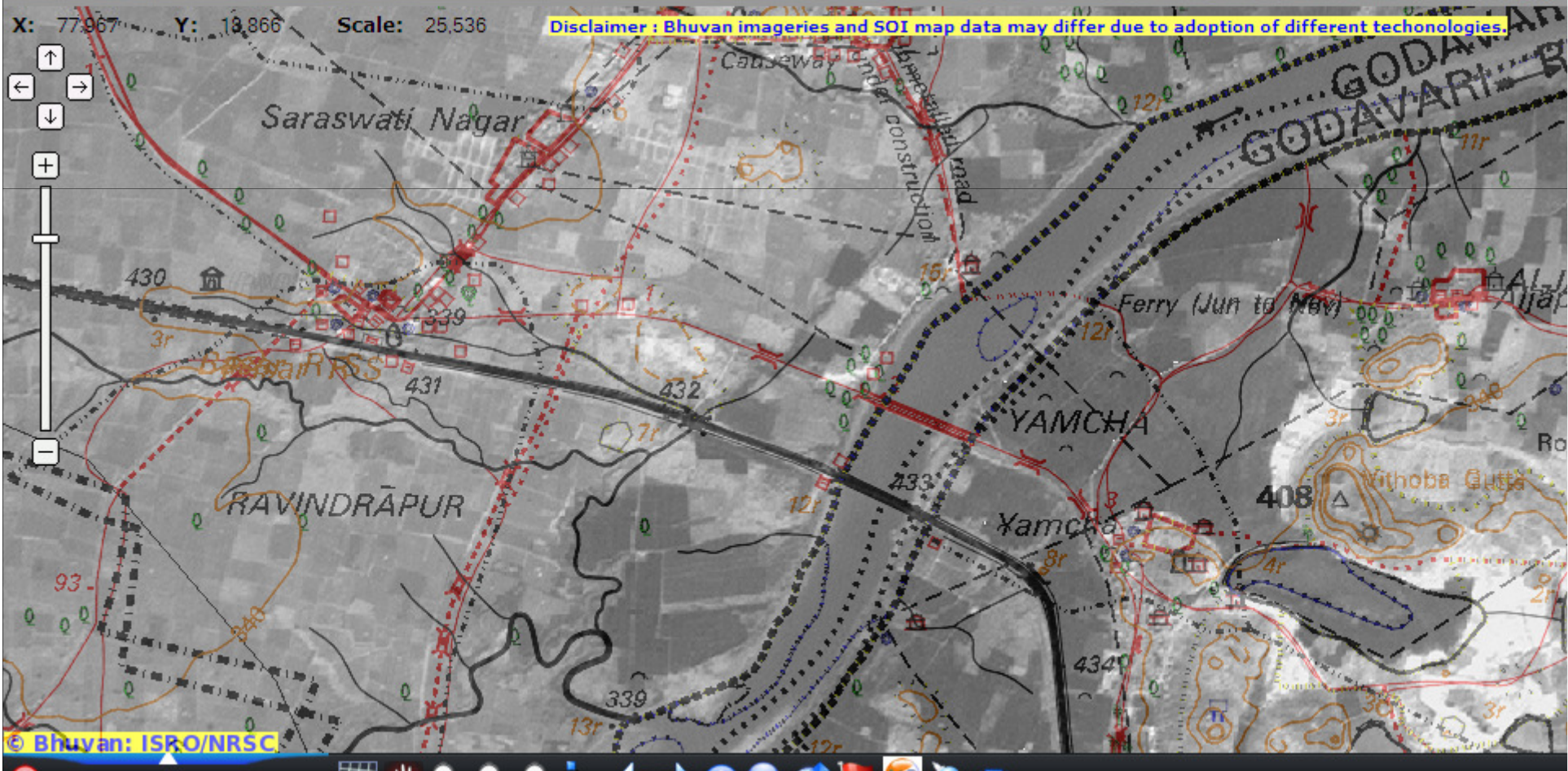


Geo DSS

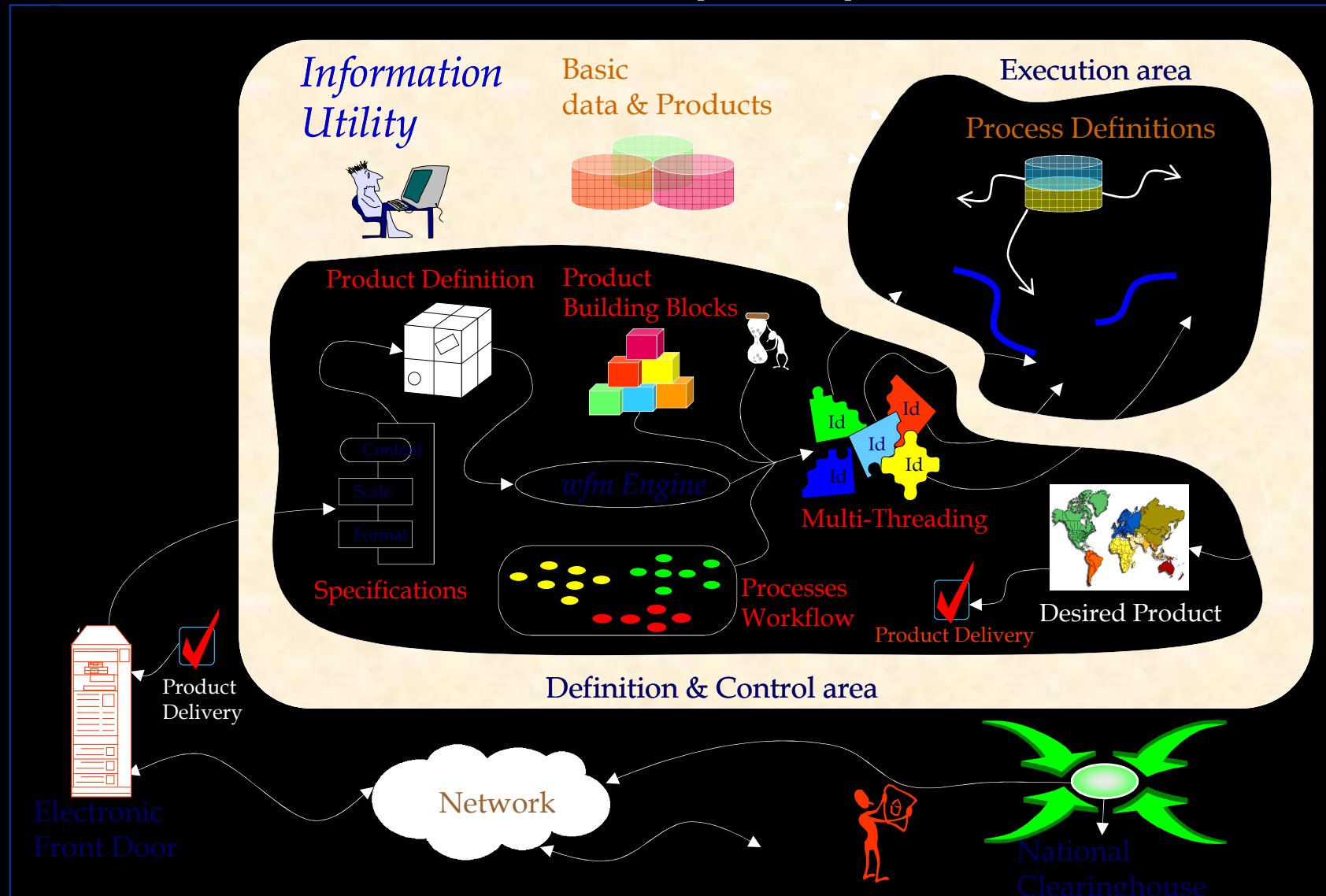
DISSEMINATION OF VILLAGE INFORMATION TO COMMON MAN THROUGH TOUCH SCREEN KIOSKS IN LOCAL LANGUAGE



nsdi India GeoPortal



Indian NSDI perspective



Let us work towards a
SAARC SDI
&
SAARC GIS